

# **IP-CAM**

**Wireless/Wired Network IP Camera**

**Night Vision & Remote Operation**

***User Manual***

# **Thank you for buying our IP camera**

**IPCAMERA AJ Series IP Camera products are designed and equipped for local and remote network video surveillance system, including wired IP bullet camera, wireless IP bullet camera, IP IR dome camera, IP IR waterproof camera, IP Pan/Tilt/Zoom Camera etc. We adopt high performance chip to ensure high quality media processor which processes audio and video collection, compression and transmission. Standard M-JPEG compression format ensures clear and streaming video performance. It enables users to view live video via IE6.0, IE7.0, IE8.0, Firefox, Google browser or other standard browser.**

**IPCAMERA AJ series IP Camera products are applicable for big, medium-sized and small enterprises, chain store, factory, home and all kinds of spots where remote network video transmission and control supposed to be installed, they are easy to be installed and operated. Before the installation of the IP camera, please check if your product accessories in the package are complete**

## **Packing List**

**Untie the pack and check the items contained against the following list:**

- IP Camera X1**
- Wi-Fi Antenna X1 (only available for wireless model)**
- Warranty Card X1**
- DC Power Supply X1**
- CD X1**
- Certificate of Quality X1**
- Mounting bracket X1**

**NOTE: Please contact us immediately if anything damaged or short of contents.**

# Table of CONTENTS

1. Product Introduction .....	3
1.1. Safety Introduction .....	3
1.2. Product Specifications.....	4
1.3. System Requirements.....	5
1.4. Product Views.....	5
1.4.1 Front View.....	5
1.4.2 Interface View.....	5
1.5. Hardware Installation.....	6
1.6. Software Installation.....	6
2. Software Operation.....	6
2.1. Search Tool Software.....	7
2.1.1. Search The IP address of the Camera.....	7
2.1.2. Configuration of the Network.....	7
3. Real-Time Video Demonstration.....	9
3.1. Camera Login.....	9
3.2. View via IE Browser.....	10
3.3. View via Safari, Firefox, Google Browser. ....	13
3.4. Main Menu interface Introduction.....	14
3.5. Administer Setting Instruction.....	15
3.5.1. Multi-Device Settings.....	16
3.5.2. Basic Network Settings.....	17
3.5.3. Wireless Settings.....	18
3.5.4. ADSL Settings.....	19
3.5.5. Dynamic DNS Settings.....	19
3.5.5.1. DDNS Setting .....	22
3.5.5.2. Port Forwarding Settings.....	23
3.5.5.3. DDNS Register.....	25
3.5.6. Email and FTP Service Settings.....	29
3.5.7. Alarm Service Settings.....	29
3.5.8. Reset/Firmware Upgrade Settings.....	30
3.5.9. Restore Factory Settings.....	31
3.5.10 Reboot Equipment.....	31
4. Warranty.....	32

# **1. Product Introduction**

## **1.1 Safety Instructions**

**(1). Use the proper power source.**

Do not use this product with a power source that supplies more than the specified Voltage (100-240V AC).

**(2). Never insert anything metallic into the camera.**

Inserting metal object into the camera can be a source of dangerous electric shock.

**(3). Do not operate in wet or dusty environment.**

Avoid places like a damp basement or dusty hallway.

**(4). Do not attempt to disassemble the camera.**

You may be subjected to severe electrical shock if you attempt to take apart the camera while the camera is connected to its power source. If there are any unusual sounds or smells coming from the camera, unplug it immediately and contact Customer Service.

**(5). Handle the camera carefully**

Dropping the camera on any hard surface may cause a malfunction. If the camera does not work properly due to physical damage, please contact Customer Service for repair or exchange.

**(6). Apply to FCC and CE Rule**

This device complies with part 15 of the FCC and CE Rules. Operation is subject to the following two conditions:

1: This device may not cause harmful interference.

2: This device must accept any interference received, including interference that may cause undesired operation.

Any changes or modifications not expressly approved by the party responsible for compliance could void the user's authority to operate the equipment. This equipment complies with FCC and CE radiation exposure limits set forth for uncontrolled environment. This equipment should be installed and operated with minimum distance 20 cm between the radiator & your body.

This transmitter must not be co-located or operating in conjunction with any other antenna or transmitter.

## **1.2. Product Specifications**

\*- Adopt high Performance, strong function media processor 32Bit RSIC

\*- High sensor CMOS

\*-Adopt optimized MJPEG video compression algorithm, realize high-definition images transmission in narrow bandwidth;

\*-Maximum support 15 users viewing at the same time, no limit for users if using forwarder

**Server function;**

- \*- Built in Web Server, convenient for users to use standard browse to realize the real time monitoring and setting administration;**
- \*-Support WIFI: 802. 11b/g wireless networking;**
- \*-Support remote system update;**
- \*-Support DDNS analysis, support LAN & Internet (ADSL,Cable Modem)**
- \*-Support variety of network protocol: TCP/IP, UDP, SMTP, PPPoE, Dynamic DNS, DNS Client, SNTP, BOOTP, DHCP, FTP, SNMP, WIFI/802. 11b/g**
- \*-Parts of modes products support one/ two way audio, talkback;**
- \*-Support motion detection alarm function (area & sensitivity Configurable);**
- \*-Support image snapshot**
- \*-Abnormal automatic recovery function, auto reconnection available when network Interruption occurred.**
- \*-Dynamic alarm function, alarm time-schedule configurable.**

### 1.3. System Requirements

<b>Features</b>	System Security	Supports three-level account, password, user authority management
	DDNS	Free DDNS bounded i.e., <a href="http://demo.vipcam.org">http://demo.vipcam.org</a>
	Cell Phone View	Support iPhone, Android cell phone view .
<b>Lens</b>	Lens Type	Glass Lens Standard : 4-9 mm
	<b>Zoom</b>	<b>3 Times Optical Zoom</b>
<b>Video</b>	Image Compression	MJPEG
	Image Frame Rate	15fps(VGA), 30fps(QVGA)
	Resolution	640 x 480(VGA), 320 x 240(QVGA)
	Flip Mirror Images	Vertical / Horizontal
	Light Frequency	50Hz, 60Hz or Outdoor
	Video Parameters	Brightness, Contrast
	<b>Night Visibility</b>	22 $\Phi$ 5 IR LEDs, Night visibility up to <b>15 meters</b>
<b>Filter Switch</b>	<b>Built-in IR Cut, With self-check function, Double optical filter automatic switch, no color deviation indoor or outdoor.</b>	
<b>Pan/Tilt</b>	Rotation Angle	Pan:355°, Tilt: 90°
	Rotation Speed	Pan:5°- 50°/ Second      Tilt:5°-30°/second
	Preset	Web Browser: 16 preset positions, CMS Software support 108 preset positions
<b>Network</b>	Ethernet	One 10/100Mbps RJ-45
	Supported Protocol	HTTP, FTP, TCP/IP, UDP, SMTP, DHCP, PPPoE, DDNS, UPnP etc.
	IP Mode	Dynamic IP address, static IP address, PPPOE
	Online Visitor	Support 4 visitors at the same time
<b>Wireless</b>	Wireless Standard	IEEE 802.11b/g/n
	Wireless Security	WEP, WPA, WPA2 Encryption
<b>Others</b>	Product Type	Metal Dome type / Waterproof outdoor use
	Power	DC12V 1A
	Working Temperature	-10~50 °C
	Working Humidity	95% RH
	<b>Size</b>	Item size: 220mm x 128mm x 230mm (LxWxH)
		Packaging size: 270mm x 260mm x 170mm (LxWxH)
	Weight	N.W.: 1655g    G.W.: 1855g (Note:Actual Weight Final)
Accessories	Adaptor, CD (including manual), Bracket, Screw	
<b>Alarm</b>	Alarm Detection	Motion detection ,Motion Detect Sensibility can be adjusted
	Alarm Action	Support Email photo, FTP photo etc.
<b>System</b>	Supported OS	Microsoft Win98 SE/ME/2000/XP/Vista/Windows7/Mac OS.
	Browser	IE6.0, IE7.0, IE8.0, FireFox, Google or other standard browser
<b>Certification</b>	<b>CE, FCC, RoHS</b>	
<b>Warranty</b>	Limited 2-Year warranty	

## 1.4. Product Views

### 1.4.1 Front View



Figure 1.1

### 1.4.2 Interface View



Figure 1.2

1: Audio Out , 2: Audio In

3: Ethernet interface: RJ-45 interface. Power Supply Light: constant on after power up  
Network light: constant sparkle after power up data transmission.

4: Antenna:

5: Power input interface: connect direct current 5V Power

## 1.5 Hardware Installation

Follow the steps below to set up your camera hardware. Make sure to follow each step carefully to ensure that the camera operates properly

1. Install the Wi-Fi antenna (For wireless model) .
2. Plug the power adaptor into camera
3. Plug the network cable into camera, the other side to the router/switch
4. It takes approx 30 seconds to boot up the camera, then you will find the IP address from “Search Tool” (Figure: 1.8)
5. When the power on and network cable connected, the green led of the real panel will keep on, The yellow led will keep flash.

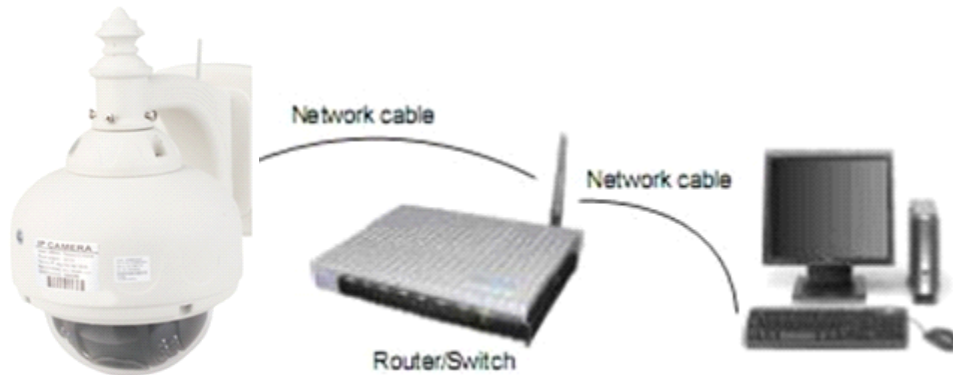


Figure 1.3

## 1.6 Software Installation




Figure 1.4

Open the CD Install the follow software:

1. ActiveX: Click “OCX setup”—“Next”—“Install”—“Finish”.



2. **Search Tool: Open the CD, click  Search Tool, The Search Tool will run automatically.( No need to install. You can copy this software to your desktop.)**



**Figure 1.5**

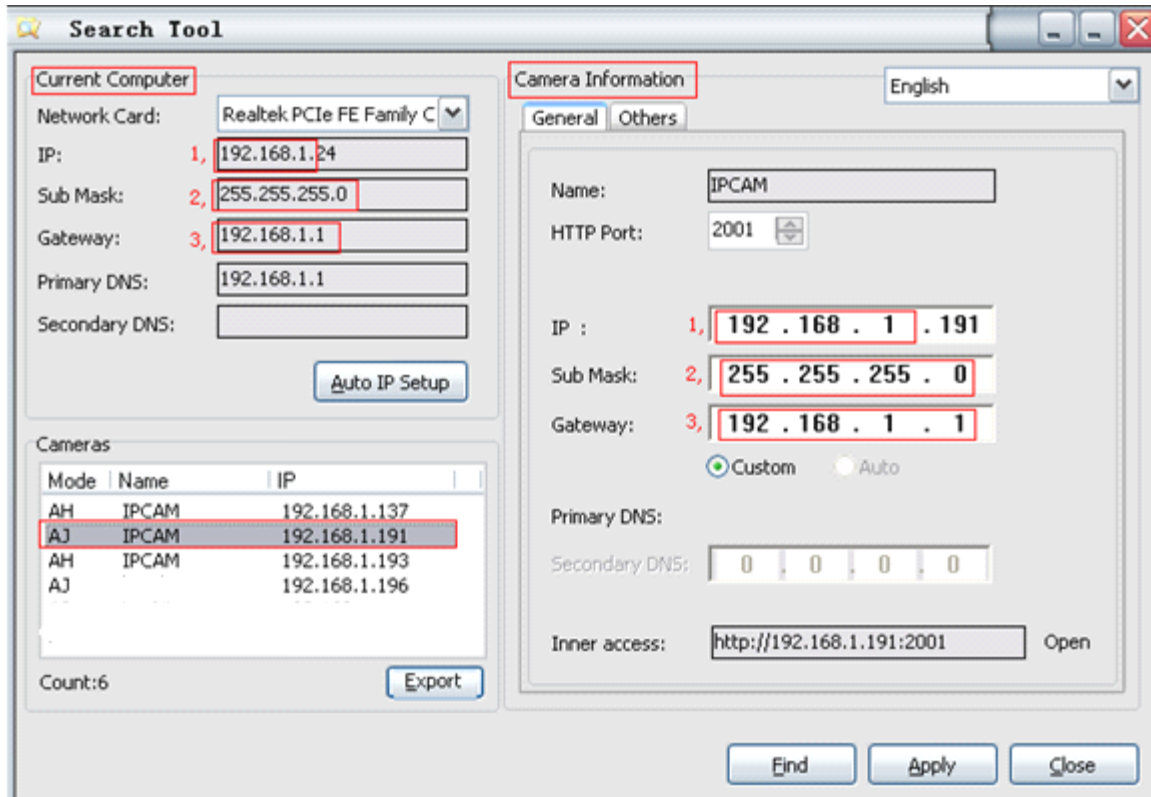
## **2. Software operation**

### **2.1 Search Tool Software**

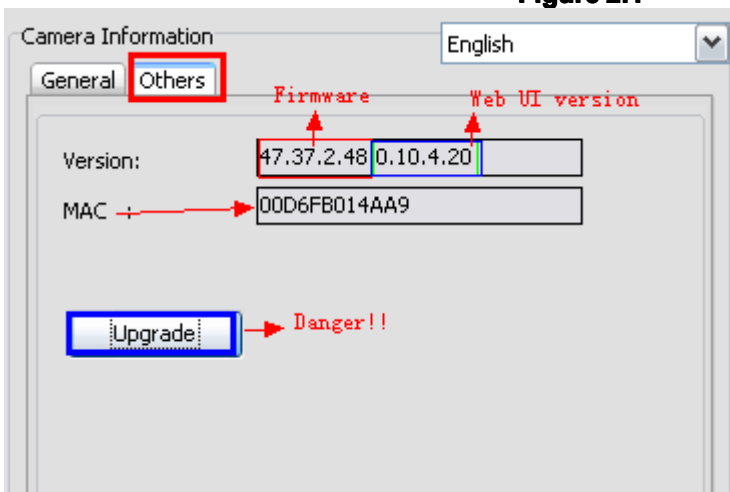
#### **2.1.1 Search the IP address of the camera.**

**When the device has been mounted properly, you can double click the Icon**

**“ Search Tool” run this IP address search tool.**



**Figure 2.1**



**Note: The software searches IP Servers automatically over LAN.**

**There are 2 cases:**

- 1. No IP Cameras found within LAN. After about 1 minute search, the Equipments List Field not show the IP address.**
- 2. IP Cameras have been installed within LAN. All the IP Cameras will be listed and the total number is displayed in the Equipments list field as shown in Figure 2.1**

**Note:**

- 1. Current Computer** indicates the Computer's IP Address information.
- 2. Equipment information** indicates the IP camera's IP Address information.
- 3. If you find that the camera's "Subnet Mask", "Gateway", "DNS Server" is not as some as your current computer's. You need try to change the camra's IP address.**

**Make sure the “Subnet Mask”, “Gateway”, “DNS Server” is the same as your router's or your current computer's.**

4. If you don't know how to configure your camera's IP address. You can click “ Update” button. The Search Tool software can help you configure a usable IP camera automatically.

## 2.1.2 Configuration of the Network

Once your camera's IP address' **Subnet Mask, Gateway, DNS Server** is the same as your PC or router, you need configure the camera's Network parameter manually.

**IP address:** Fill in the IP address assigned and make sure it is in the same subnet as the **Gateway**, and the subnet should be the same as your computer or router. (i.e. the first three sections are the same)

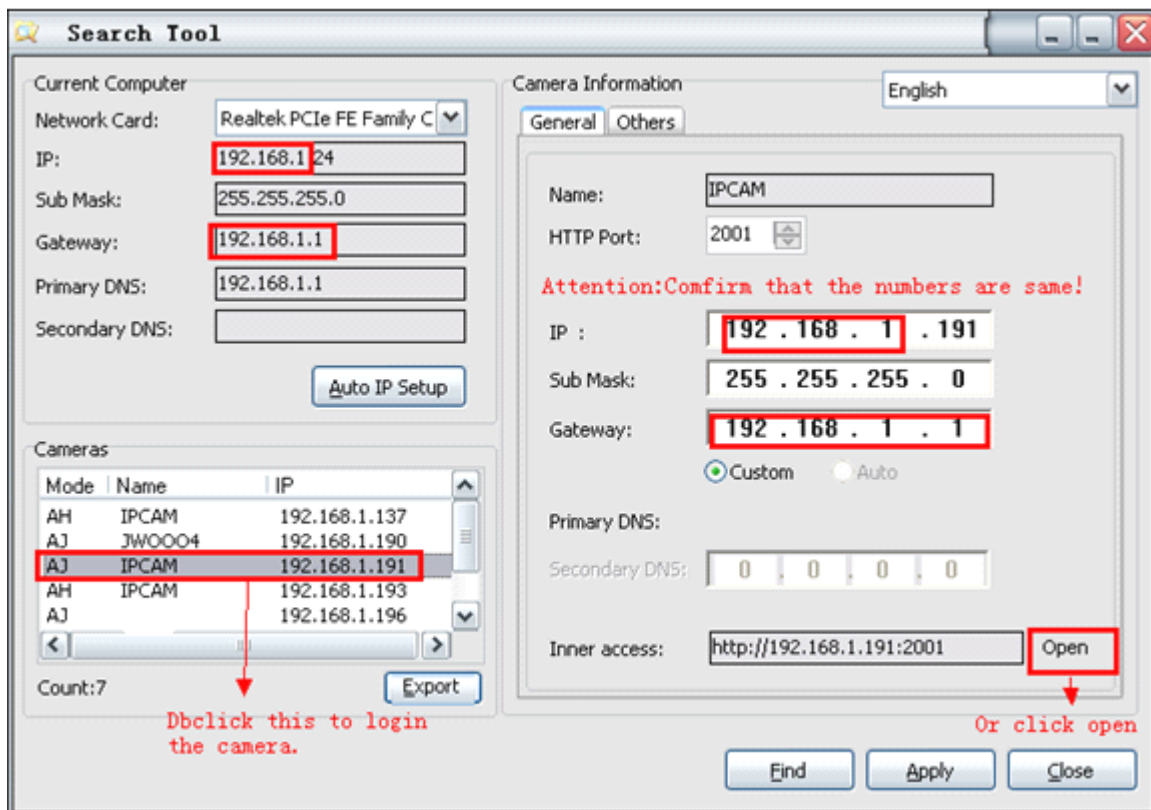
**Subnet Mask:** The default subnet mask of the equipment is: 255.255.255.0. You can find the subnet mask from your PC or router.

**Gateway:** Make sure it is in the same subnet with PC's IP address .Here gateway is the LAN IP of your router.

**Primary DNS:** IP address of IPS network provider. You can also set it as the same as the Gateway.

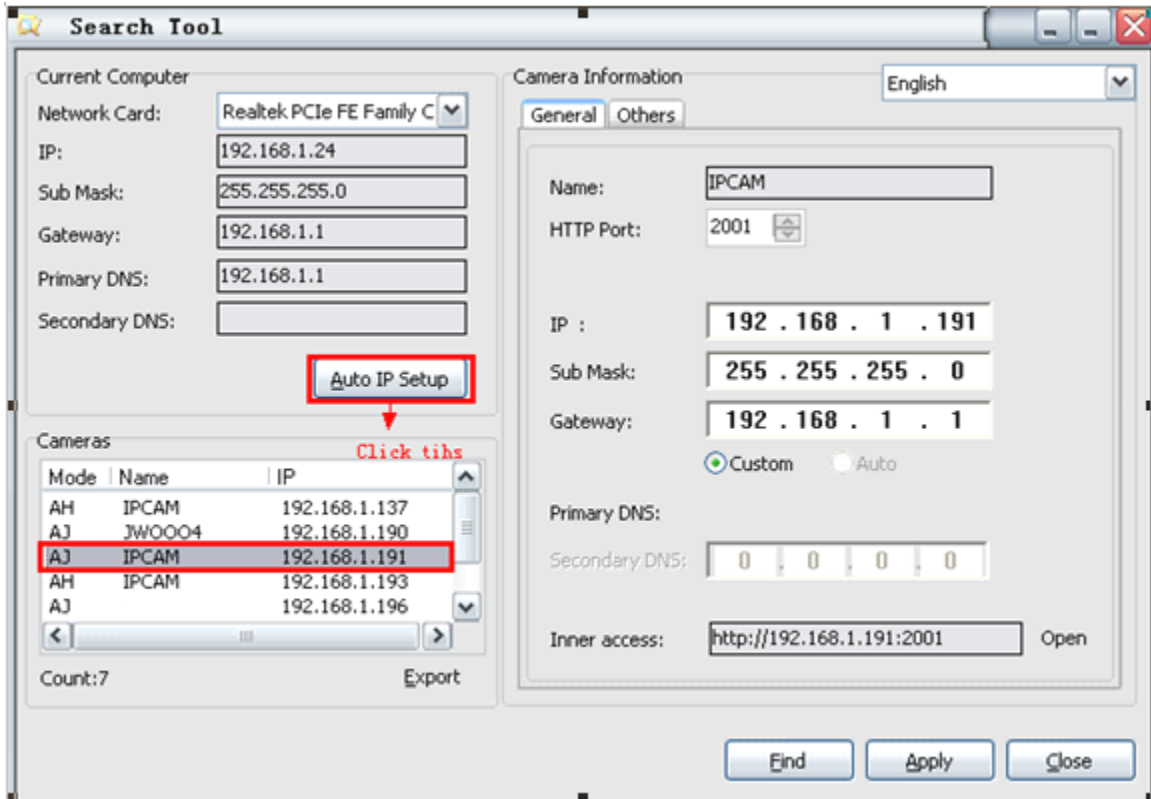
**NOTE:** You can find out the **Subnet Mask, Gateway, Primary DNS** of your PC from the “Search Tool” software.

**Http Port:** LAN port assigned for the equipment, default is 99. You can change the port number to any one you want such as : 98,211,9999 etc.



**Figure 2.2**

**Change the camera information:** If necessary (the numbers are not the same), you need to change the camera information, **Port, IP, or Gateway**. There are two ways to change them.



**Figure 2.3**

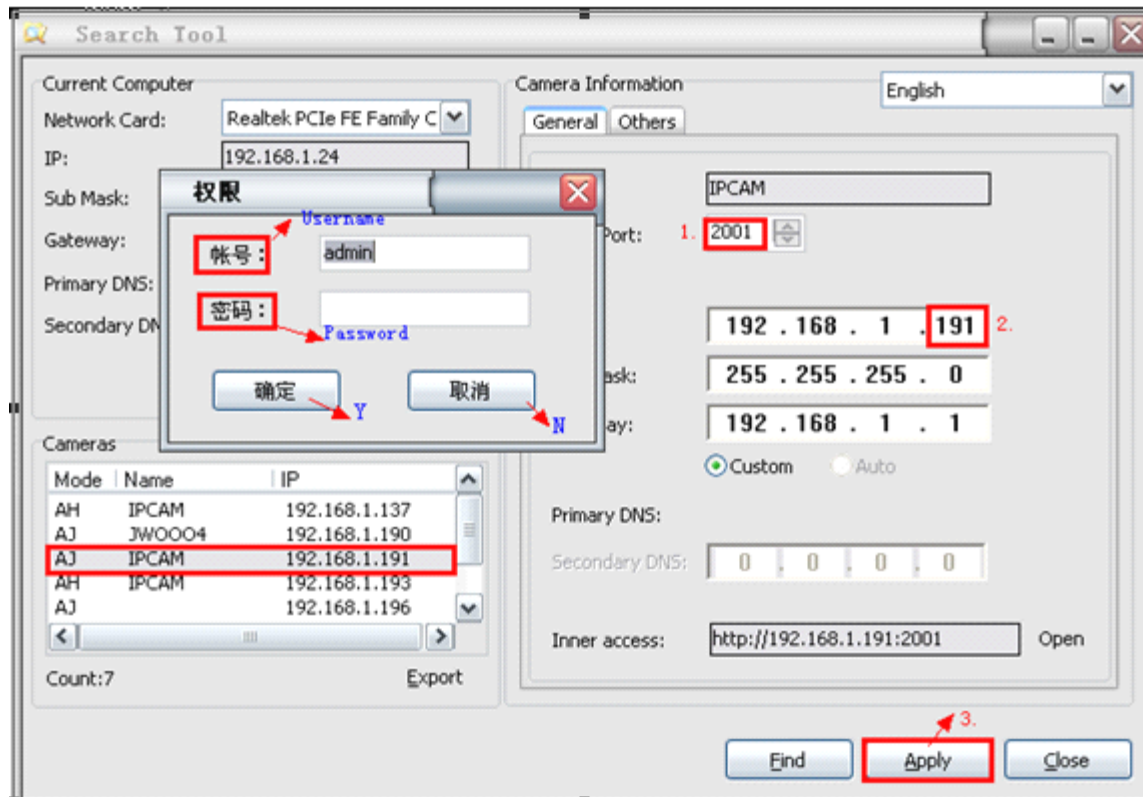


Figure 2.4

## 3: Real-time Video Demonstration.

### 3.1. Camera Login:

You can access the camera through **IP Camera Tool** or **IE, Firefox, Safari, Google Chrome or other standard browser** directly.

1. Double click the IP address of the IP Camera listed (Figure 2.1). The default browser you use will run automatically and come to the camera login interface. (Figure 3.1)
2. To access the camera by IE Browser directly, just type the camera's IP address, for example, if the camera's IP address is 192.168.1.99:99:

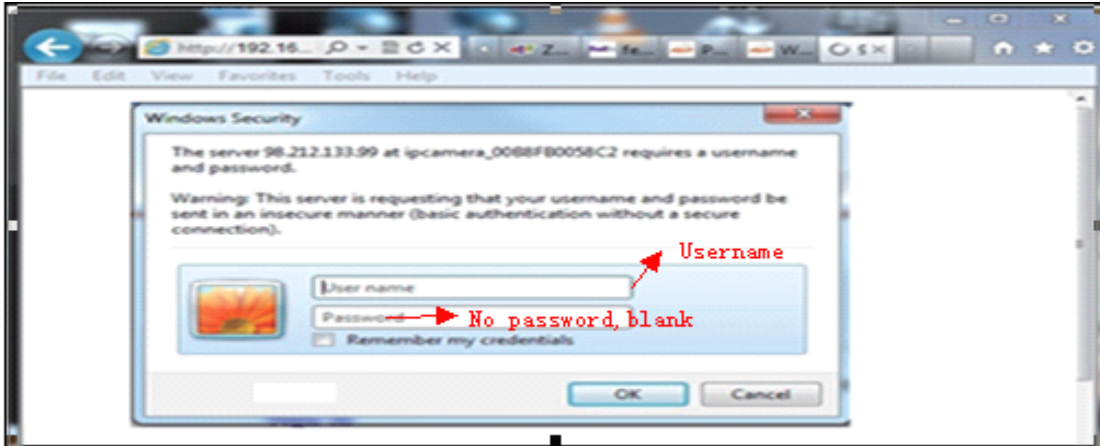


Figure 3.1

**Default username: admin**  
**Password: no password.**

Input the correct user name and password, the Sign In interface will pop-up. There are three models to login (figure 3.2).

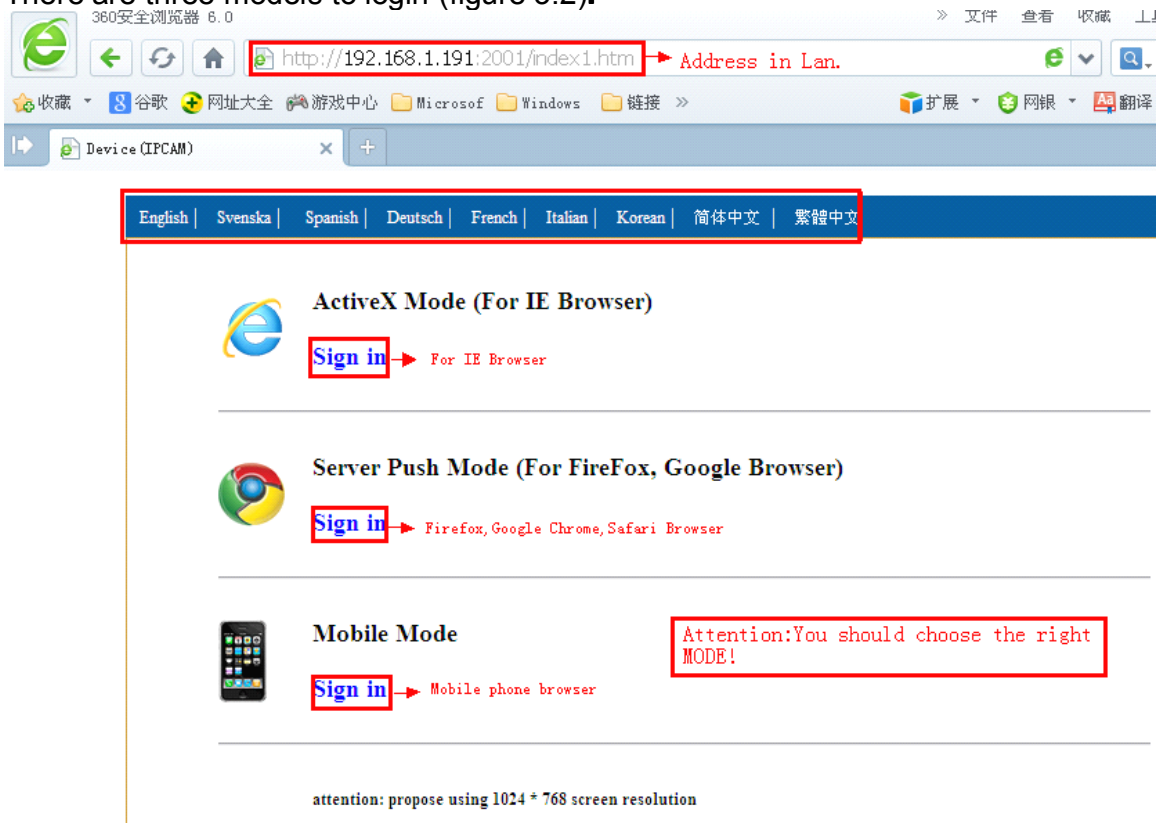


Figure 3.2

- (1) Active Mode (For IE Browser): available in IE6.0 or above explorer
- (2) "Server Push Mode": available in Firefox, Safari, and Google Chrome browser.
- (3) "Snap Motion Mode": available in Mobile phone

## 3.2. View via IE Browser.

Choose **Active Mode (For IE Browser)**, and sign in.

The first time login the camera, maybe get ActiveX prompt as the picture above, please click the prompt and choose **Run Add-on**, refresh and login the camera again, then will see live video, details as below:

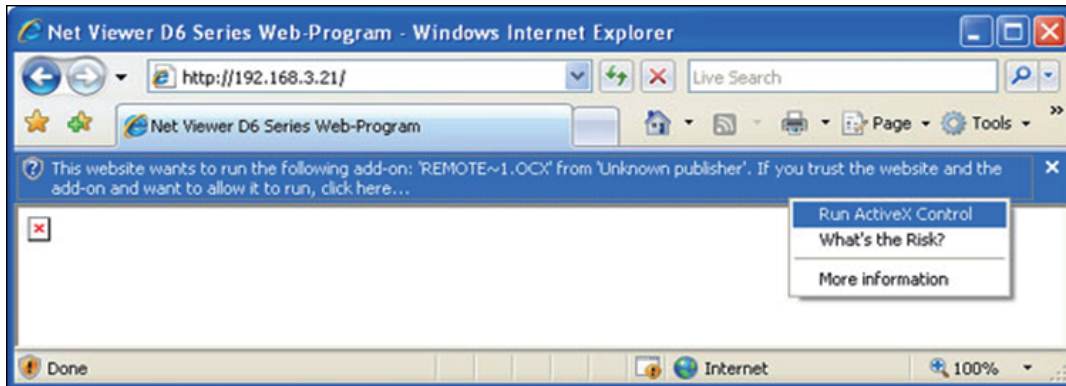


Figure 3.3 Windows XP system

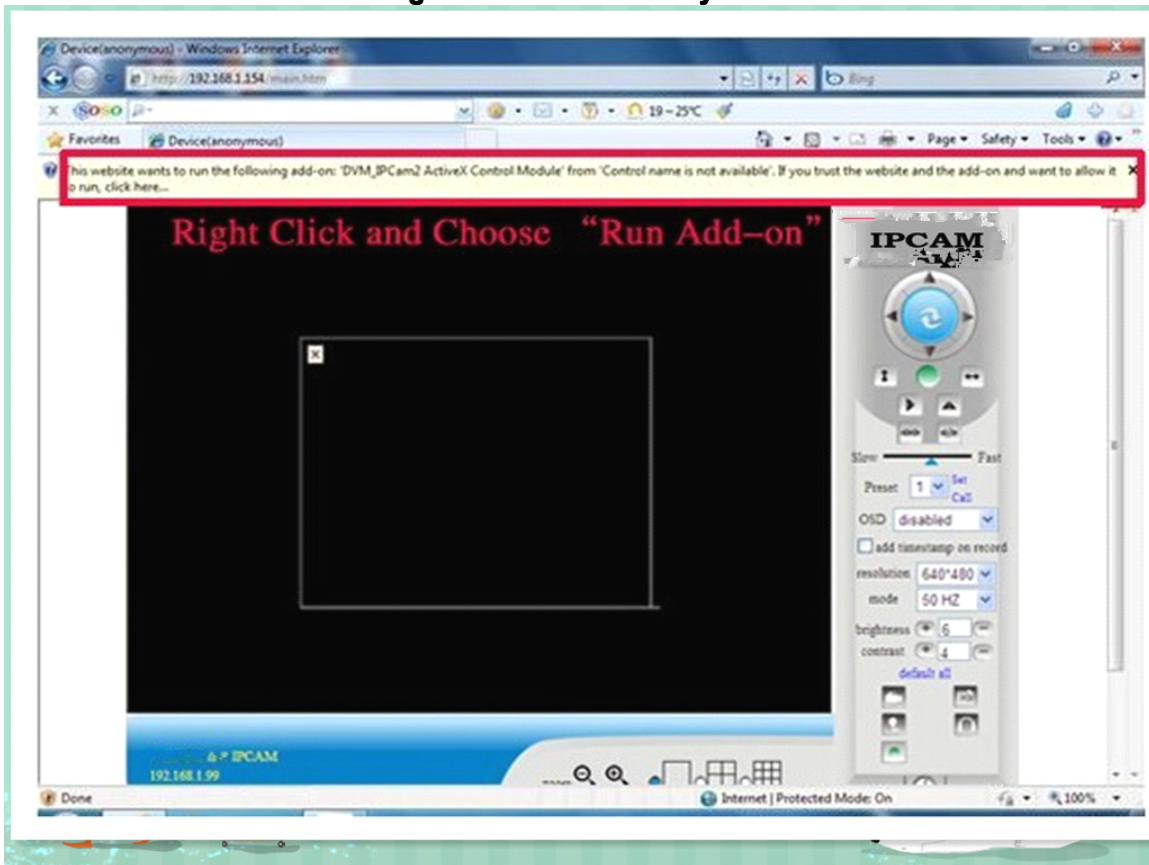
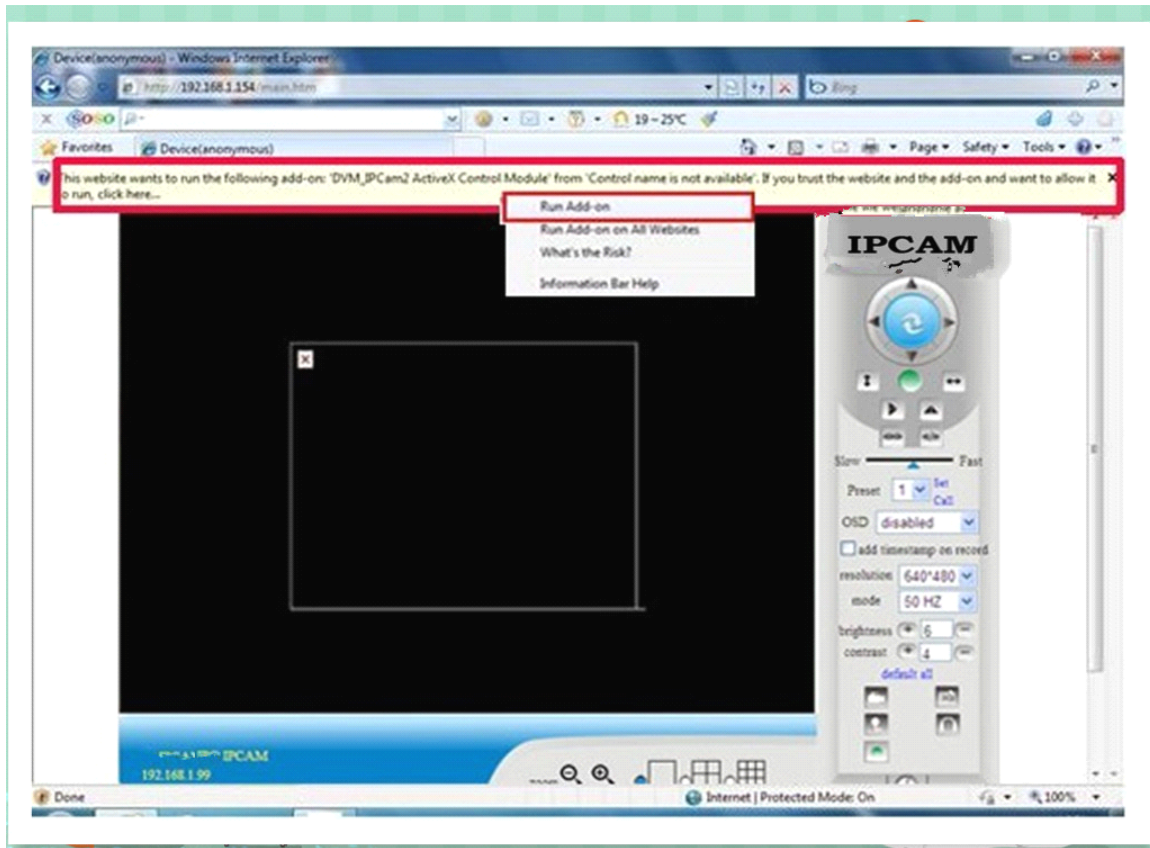


Figure 3.4 Win7 System



**Figure 3.5**

**Note:** If there is still no live video after run ActiveX, please try to enable the ActiveX options of IE security settings, please do the follow steps:

**1. Close the firewall of your computer.**

**2. Change the ActiveX settings, "IE" browser > "Tool" > "Internet Options" > "Security"> "Custom Level" > "ActiveX control and Plug-ins", all the ActiveX options set to be "Enable": Especially:**

**Enable: Download unsigned ActiveX controls**

**Enable: Initialize and script ActiveX controls not marked as safe**

**Enable: Run ActiveX controls and plu-ins**



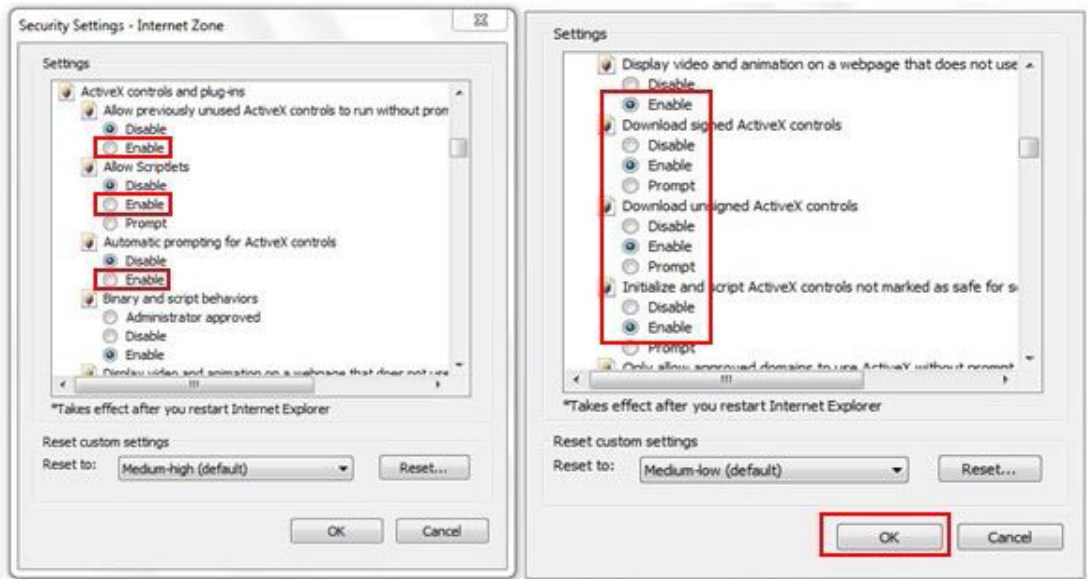
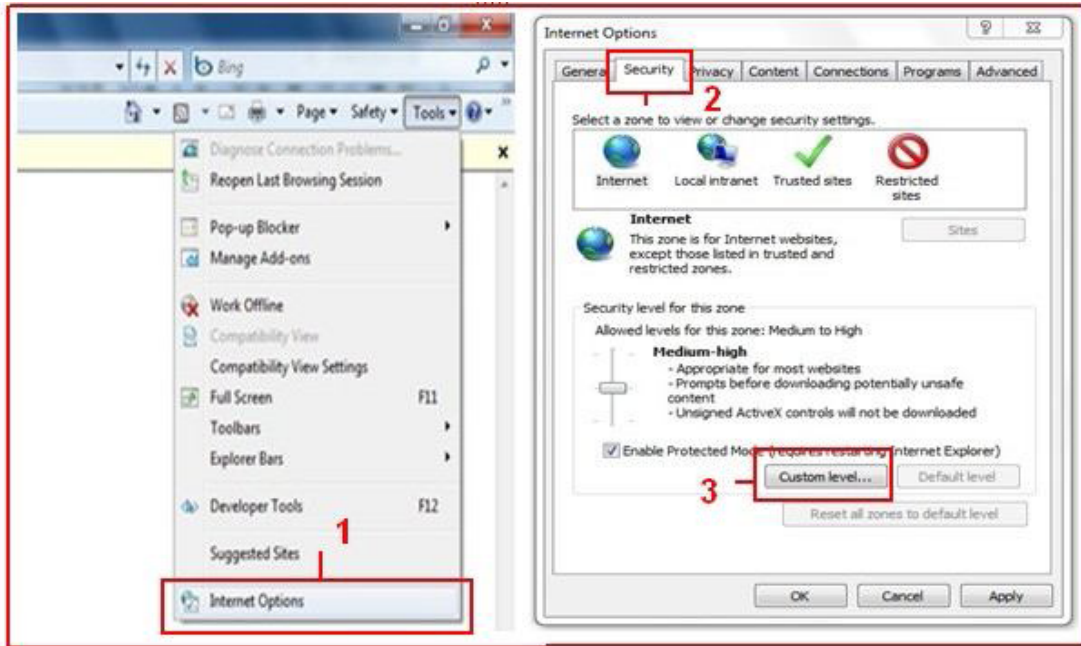


Figure 3.6

In Addition: you can also click “start” menu->“Internet Explorer”, choose “Internet attributes “ to enter, or via “Control Panel” ->“Internet Explorer”, enter to Security setting. 3. If there is still no image, please close your anti-virus software, and then try step 1 & 2 again.

4. If you allowed the Active X running, But still could not see live video, Only a Red

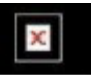

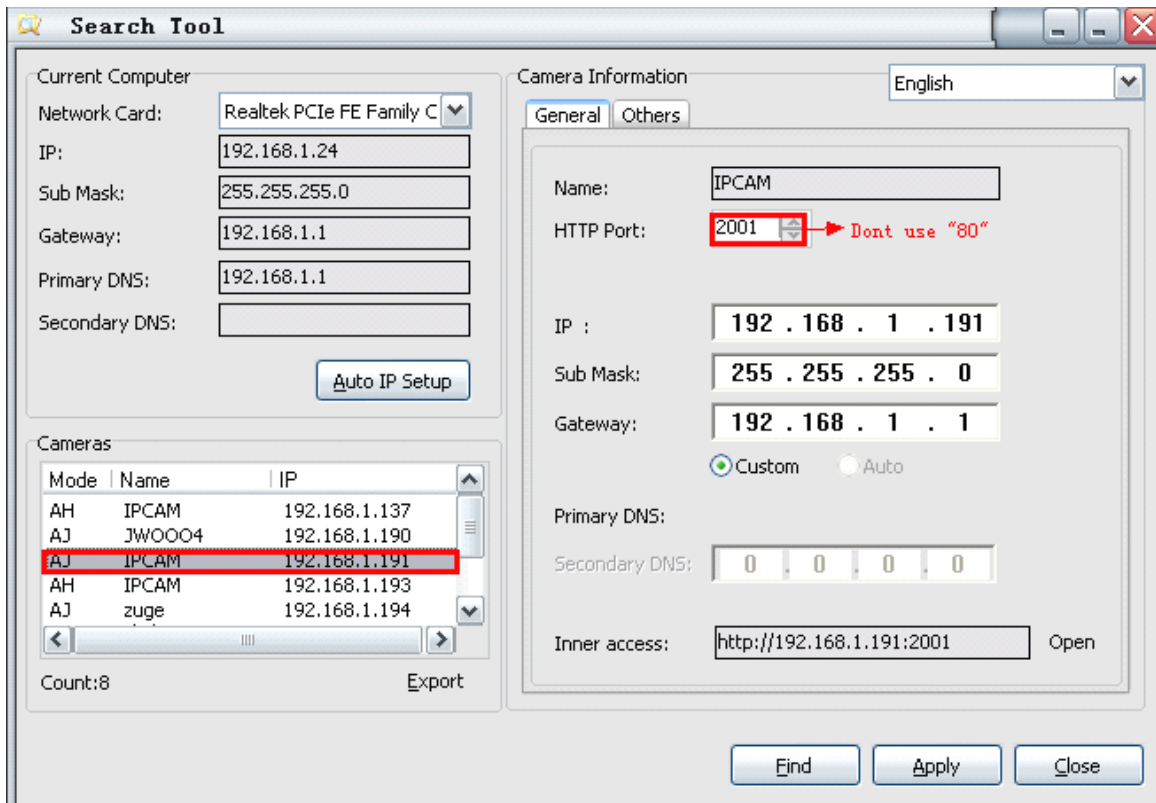
Cross  in the center of the video, And the device status light change to yellow color , not green please change another port number to try, Don't use port 80, use other port such as 99, 199 etc.

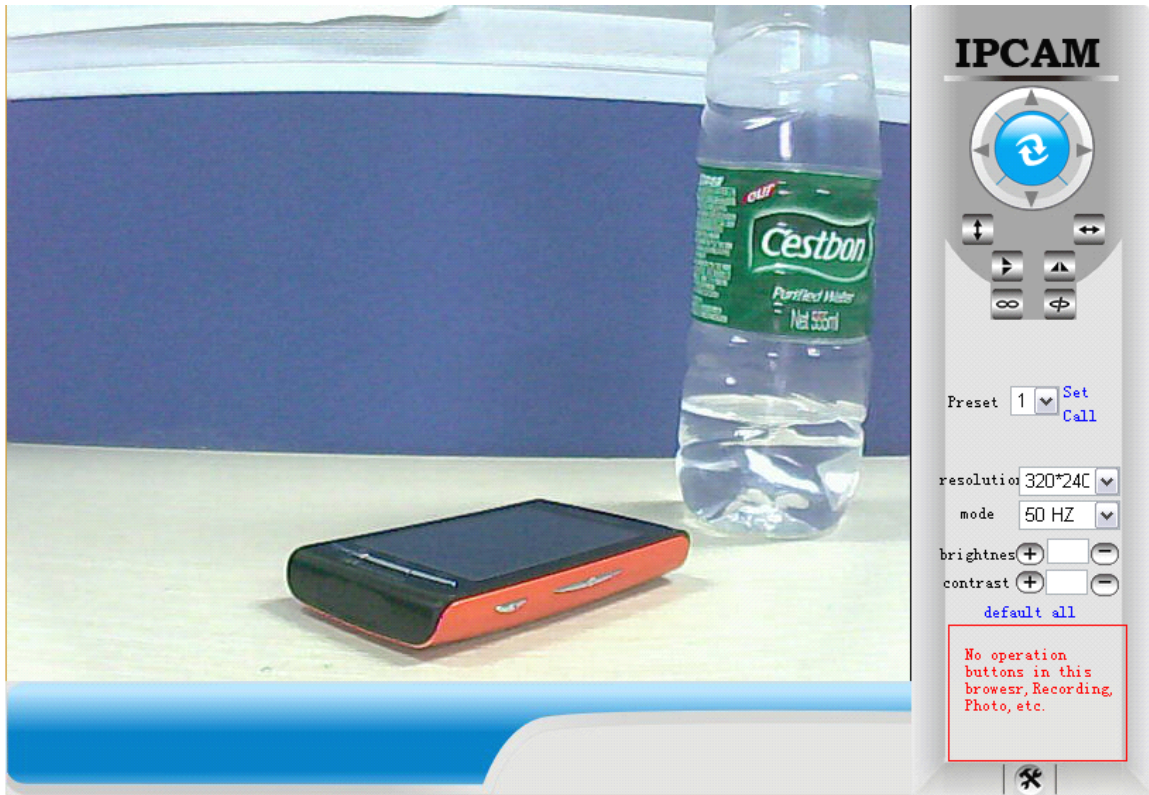
Figure 3.7



**NOTE:** Make sure that the firewall or anti-virus software doesn't block the software or ActiveX. If you couldn't see live video, please close your firewall or anti-virus software, and try again.

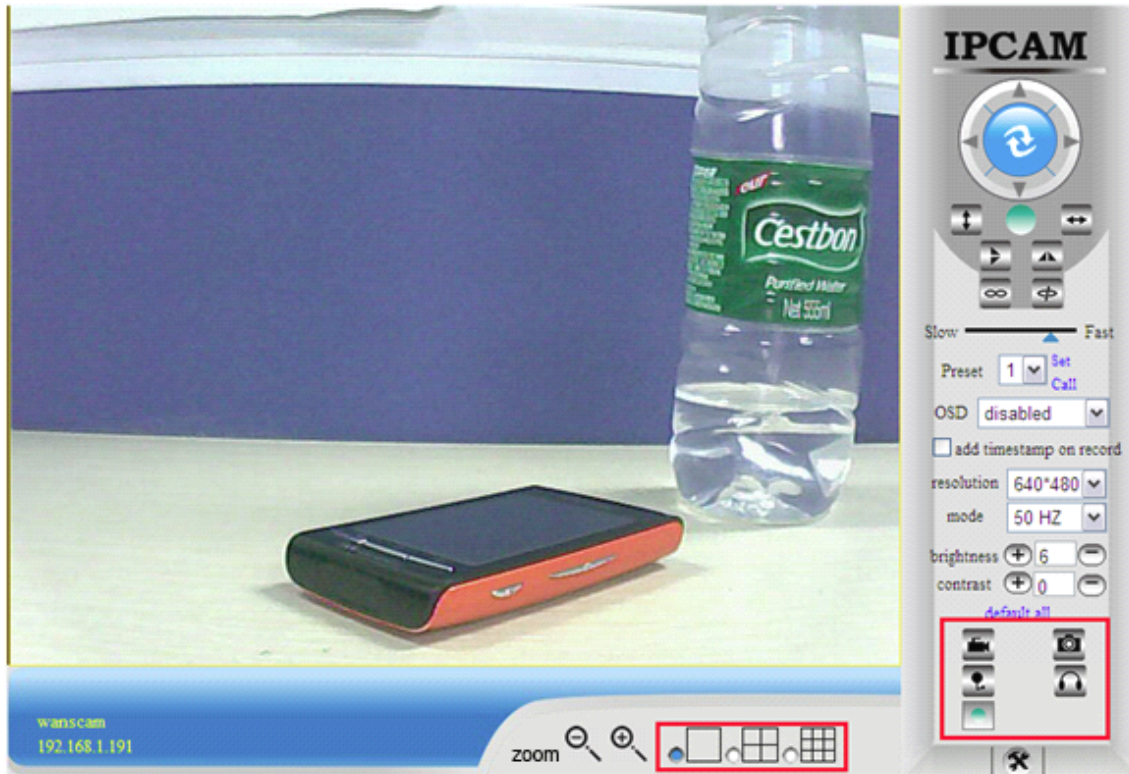
### 3.3. View via Safari, Firefox, Google Browser

**Choose Server Push Mode (For Safari, Firefox, Google Browser), and sign in Server Push Mode doesn't support ActiveX, so some functions are not available, such As Record, Audio, Talk, Speaker, The speed control bar, Zoom etc.), if you want to use these functions, please use IE Browser. The Control Interface in this mode is as bellow:**



### 3.4. Main Menu interface introduction

Take the “Active Mode(For IE Browser)” For example:



**Figure 3.8**



Make the camera back to the center  
Pan right and left  
Tilt up and down

**The Pan/Tilt Feature only work**

**when the cameras have this Pan/Tilt function.**

 **This option enables log detection. After the online user clicks this button, a log is entered into the camera's Log Data documenting the IP address of users who have accessed the IP camera. This Option enables alarm detections too.**

 **This button make the camera Vertical cruise (for the Pan/Tilt Cams).**

 **This button make the camera Level cruise (for the Pan/Tilt Cams).**

 **This button flips the image vertically.**

 **This button flips the image horizontally.**

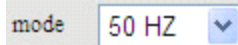
  **This button for turn on and turn off the IR LED Light.**

Slow  Fast **Control the speed of the Pan/tilt. Only work for the Pan/tilt Cams.**

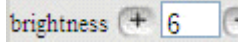
Preset 1   **This button for setting the Preset of the camera. Only work for Pan/tilt Cams**

OSD disabled  **This setting changes the color of the OSD lettering.**

resolution 640\*480  **This setting changes the image resolution.**



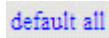
This setting changes the image frequency.



This setting changes the image brightness.



This setting changes the image contrast.



This option resets all main menu options to factory default.



This option opens the camera's recording functionality menu.



This option takes a snapshot of the current screen and saves the snapshot to the PC's Hard Drive.



This option enables User-to Camera audio. If the online user



This option enables Camera-to-User audio. If the online user has speakers connected and configured to their PC, clicking this option will allow them to hear audio from the location of the camera.



This option enables the camera's Network Indicator LED light turn on or turn off.



This button opens the IP camera's Backend Menu



These options enable single view, quad screen view, or 9 screen view: This function serves no purpose unless you have more than one camera connected and configured to your interface.

\* Please refer to section 8.1.1 Multi-Device Settings\*



This feature is only supported by the PTZ IP Camera. Enable the Zoom Function.

### 3.5. Administrator Setting Instruction

When login as Administrator, you can enter the IP Camera for Administrator. Administrator supports all the settings and operations of the camera; you can set and control it freely There are some special functions only for administrator as below:

**Alias setting** : You can set your favorite device aliases,that is the name of your camera.

**Date&Time set** : Setinging the date and time.

**Uer settings** : Can be set up to 8 users. On this page you can set up accounts of the user name, password, as well as in their packet (administrator, operator, visitor).

- **Visitor** : In this mode, you can only visit.
- **Operator** :You can set the direction of the lens device, set the video screen's brightness, contrast and other parameter.
- **Administrator** : You can set the device advanced configuration.

**UPnP set** :If you want internet access IPCAM, to ensure that the state is successful UPnP.

**Device Firmware Upgrade**: The system firmware update the device firmware and application of Web UI

**Restore factory settings** : When there is not a response when the error occurred, you can restore the factory settings to resolve the device.

**Reboot the device** : You can reboot the device.

**Back**: Return to monitor mode.

Device Status	
Device ID	00D6FB014AA9
Device Firmware Version	47.37.2.48
Device Embedded Web UI Version	0.10.4.20
Alias	IPCAM
Alarm Status	None
DDNS Status	88safe Succeed
UPnP Status	UPnP Failed: Rejected by UPnP Device, Maybe Port Conflict
P2P Status	No Action
MSN Status	No Action
<input type="button" value="Refresh"/>	

<a href="#">Device Info</a>
<a href="#">Alias Settings</a>
<a href="#">Date&amp;Time Settings</a>
<a href="#">Users Settings</a>
<a href="#">Multi-Device Settings</a>
<a href="#">Basic Network Settings</a>
<a href="#">Wireless Lan Settings</a>
<a href="#">ADSL Settings</a>
<a href="#">UPnP Settings</a>
<a href="#">DDNS Service Settings</a>
<a href="#">Mail Service Settings</a>
<a href="#">Ftp Service Settings</a>
<a href="#">MSN Settings</a>
<a href="#">Alarm Service Settings</a>
<a href="#">PTZ Settings</a>
<a href="#">Decoder Settings</a>
<a href="#">Upgrade Device Firmware</a>
<a href="#">Backup &amp; Restore Settings</a>
<a href="#">Restore Factory Settings</a>
<a href="#">Reboot Device</a>
<a href="#">Log</a>
<a href="#">GotoCamera</a>
<a href="#">Back</a>

### 3.5.1 Multi-Device Settings

- **Add a local area network equipment**

In the multi-device configuration page, you can see all the equipment inside the LAN. The first device is the default device. You can add more devices listed in the list of equipment. Embedded applications, up to 4 devices at the same time-line. Click the "second road equipment" and double-click "Current list of devices in the LAN" in the device entry name, host address, Http port will automatically be filled, require the user to fill in the correct account name and password, click "Add." Repeat this process you can continue to add devices. Finally do not forget to click on the "Settings" button.

Device Status	
Device ID	00D6FB014AA9
Device Firmware Version	47.37.2.48
Device Embedded Web UI Version	0.10.4.20
Alias	IPCAM
Alarm Status	None
DDNS Status	88safe Succeed
UPnP Status	UPnP Failed: Rejected by UPnP Device, Maybe Port Conflict
P2P Status	No Action
MSN Status	No Action
<input type="button" value="Refresh"/>	

Device Info
<a href="#">Alias Settings</a>
<a href="#">Date&amp;Time Settings</a>
<a href="#">Users Settings</a>
<a href="#">Multi-Device Settings</a>
<a href="#">Basic Network Settings</a>
<a href="#">Wireless Lan Settings</a>
<a href="#">ADSL Settings</a>
<a href="#">UPnP Settings</a>
<a href="#">DDNS Service Settings</a>
<a href="#">Mail Service Settings</a>
<a href="#">Ftp Service Settings</a>
<a href="#">MSN Settings</a>
<a href="#">Alarm Service Settings</a>
<a href="#">PTZ Settings</a>
<a href="#">Decoder Settings</a>
<a href="#">Upgrade Device Firmware</a>
<a href="#">Backup &amp; Restore Settings</a>
<a href="#">Restore Factory Settings</a>
<a href="#">Reboot Device</a>
<a href="#">Log</a>
<a href="#">GotoCamera</a>
<a href="#">Back</a>

**Figure 3.9**

● **Add a device on the internet**

**First, make sure you want to add devices to access via IP address or domain name. For example: <http://202.96.133.134:9008> or <http://IPcam.dyndns.org:9008>. And then fill in host address: 202.96.133.134 HttpPort: 9008 or host address: IPcam.dyndns.org Http port: 9008. and fill in the correct account name and password to the last click on "Add." Repeat the above steps can add other devices**



**Figure 3.10**

### 3.5.2 Network Settings

Basic Network Settings	
Obtain IP from DHCP Server	<input type="checkbox"/>
IP Addr	192.168.1.191
Subnet Mask	255.255.255.0
Gateway	192.168.1.1
DNS Server	192.168.1.1
Http Port	2001
<input type="button" value="Submit"/> <input type="button" value="Refresh"/>	

- [Device Info](#)
- [Alias Settings](#)
- [Date&Time Settings](#)
- [Users Settings](#)
- [Multi-Device Settings](#)
- [Basic Network Settings](#)
- [Wireless Lan Settings](#)
- [ADSL Settings](#)
- [UPnP Settings](#)
- [DDNS Service Settings](#)
- [Mail Service Settings](#)

**Figure 3.11**

**This sector is for DHCP and IP configuration, port forwarding is needed, If you want to set IP address, please fill in the relative IP address, subnet mask, gateway, DNS server, Http port;**

### 3.5.3 Wireless Settings

- 1. Make sure the router is a wireless router.**
- 2. Make sure the Wi-Fi antenna tighten up.**

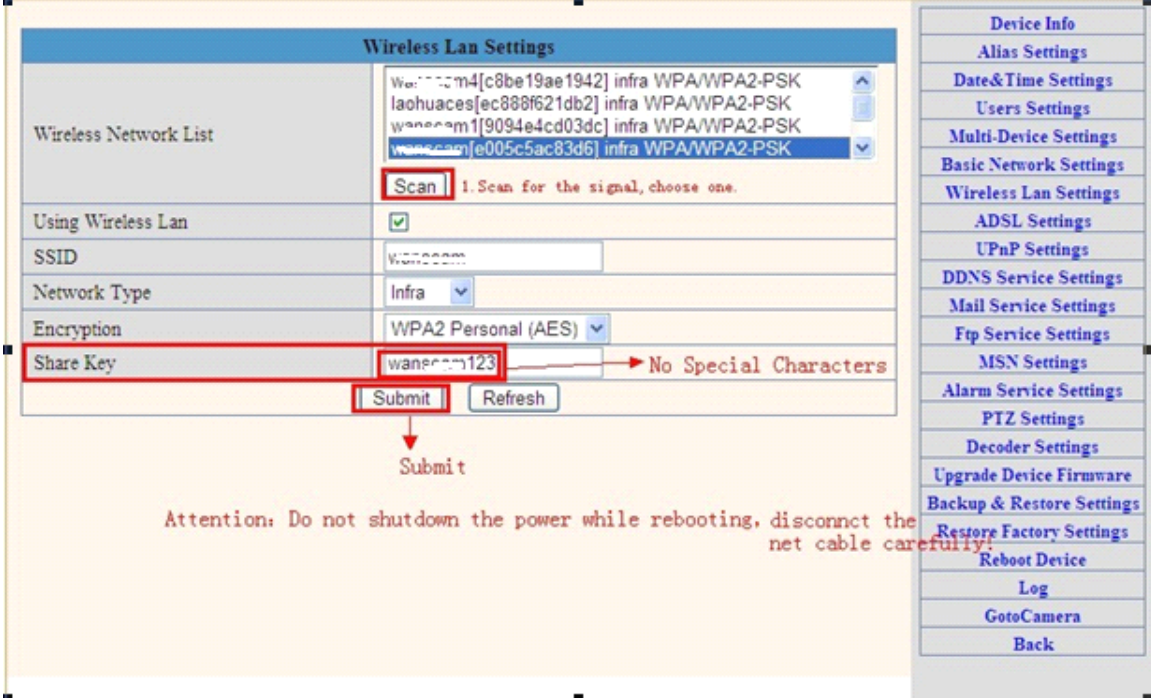


3. Make sure whether there is encryption of the WLAN of the router, if there is encryption, keep the key. **Attention: No special characters in the SHARE KEY.**

4. Login the camera, click  >“Wireless Lan Settings”>“Scan”, please scan 2times, then you will find the WLAN from the list, choose the one you use.

5. If there is no encryption, just click “Submit”, if there is encryption, please input the key, then click “Submit”.

6. Wait about 30 seconds, the camera will reboot, then unplug the network cable.

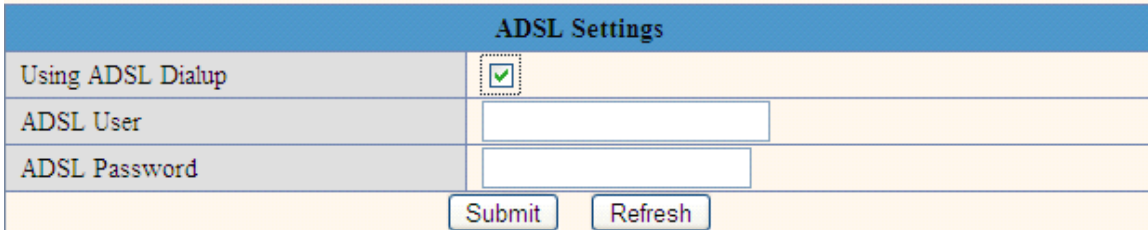


The screenshot shows the 'Wireless Lan Settings' page. It includes a 'Wireless Network List' with several entries, a 'Scan' button, and configuration fields for 'Using Wireless Lan', 'SSID', 'Network Type', 'Encryption', and 'Share Key'. The 'Share Key' field contains 'wanecom123'. A 'Submit' button is highlighted with a red box. A red arrow points from the text 'No Special Characters' to the 'Share Key' field. Another red arrow points from the 'Submit' button to the text 'Submit' below the form. A third red arrow points from the 'Submit' button to the text 'Attention: Do not shutdown the power while rebooting, disconnect the net cable carefully!' below the form.

Figure 3.12

### 3.5.4 ADSL Setting

When your device directly connected to the Internet via ADSL, when you need to enter fill in your ISP service providers obtain from the account name and password. Duly completed and click “Settings” button. Your device can connect to the internet has.



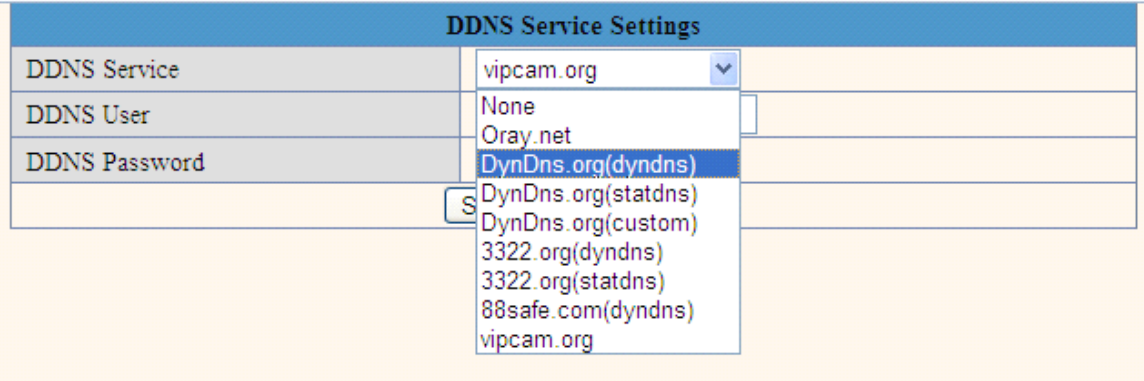
The screenshot shows the 'ADSL Settings' page. It includes a 'Using ADSL Dialup' checkbox which is checked, and input fields for 'ADSL User' and 'ADSL Password'. 'Submit' and 'Refresh' buttons are at the bottom.

Figure 3.13

### 3.5.5 Dynamic DNS Setting (DDNS)

#### 3.5.5.1 DDNS Setting:

(1): Click  > “DDNS Service Settings”.



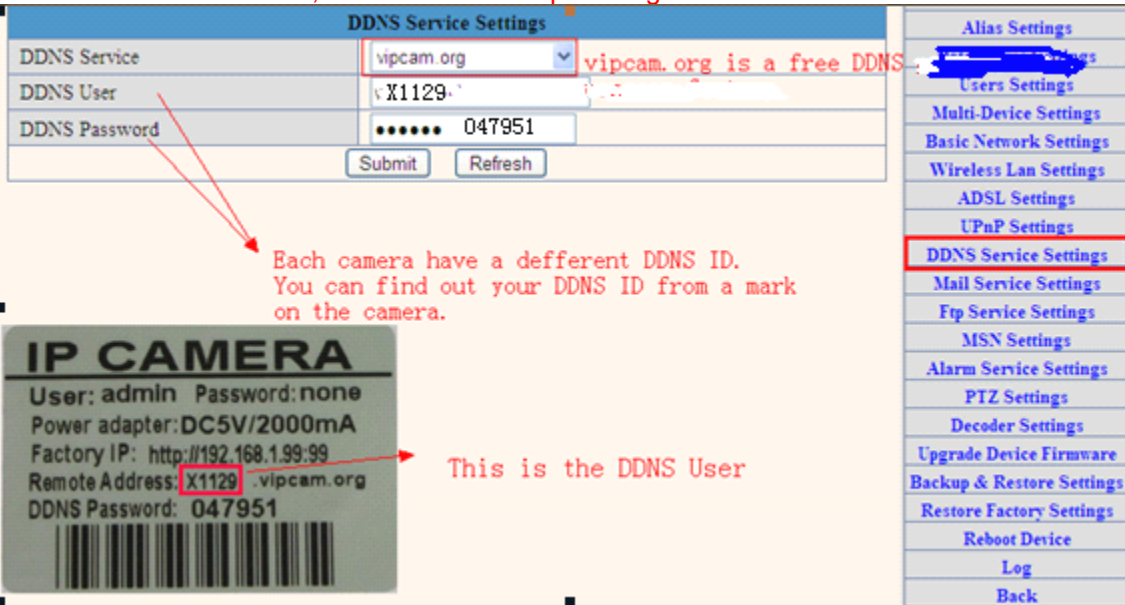
DDNS Service Settings	
DDNS Service	vipcam.org
DDNS User	None
DDNS Password	Oray.net
	DynDns.org(dyndns)
	DynDns.org(statdns)
	DynDns.org(custom)
	3322.org(dyndns)
	3322.org(statdns)
	88safe.com(dyndns)
	vipcam.org

Figure 3.14

(2): Choose the DDNS, there are 4 kinds of options:

(1): **Manufacturer’ DDNS:** We provide a free DDNS: **vipcam.org**. This domain is provided by manufacturer.

Note: 88safe.com is old DDNS provided by manufacturer also. If you want to use the manufacturer’s free DDNS, Please Choose “ vipcam.org “.



DDNS Service Settings

DDNS Service	vipcam.org	vipcam.org is a free DDNS.
DDNS User	X1129	
DDNS Password	047951	

Submit Refresh

Each camera have a defferent DDNS ID. You can find out your DDNS ID from a mark on the camera.

**IP CAMERA**

User: admin Password: none

Power adapter: DC5V/2000mA

Factory IP: http://192.168.1.99:99

Remote Address: X1129.vipcam.org

DDNS Password: 047951

This is the DDNS User

- Alias Settings
- Users Settings
- Multi-Device Settings
- Basic Network Settings
- Wireless Lan Settings
- ADSL Settings
- UPnP Settings
- DDNS Service Settings**
- Mail Service Settings
- Ftp Service Settings
- MSN Settings
- Alarm Service Settings
- PTZ Settings
- Decoder Settings
- Upgrade Device Firmware
- Backup & Restore Settings
- Restore Factory Settings
- Reboot Device
- Log
- Back

Figure 3.15

(2): **The Third Party DDNS:** This domain is provided by the 3<sup>rd</sup> party, such as Dyndns, Oray, 3322

If you use the third party DDNS, please choose the server you need, such as “3322.org” or “dyndns.org” as below:

DDNS Service Settings	
DDNS Service	DynDns.org(dyndns) ▾
DDNS User	ipcam
DDNS Password	●●●●●●
DDNS Host	ipcam.dyndns.org
DDNS or Proxy Server	
DDNS or Proxy Port	
Re-Update Ignoring All Errors	<input type="checkbox"/> never do this unless your hostname has been
proxy config is needed if the device is in China Mainland or HongKong	
<input type="button" value="Submit"/> <input type="button" value="Refresh"/>	

**Figure 3.16**

DDNS Service Settings	
DDNS Service	3322.org(statdns) ▾
DDNS User	ipcam
DDNS Password	●●●●●●
DDNS Host	ipcam
<input type="button" value="Submit"/> <input type="button" value="Refresh"/>	

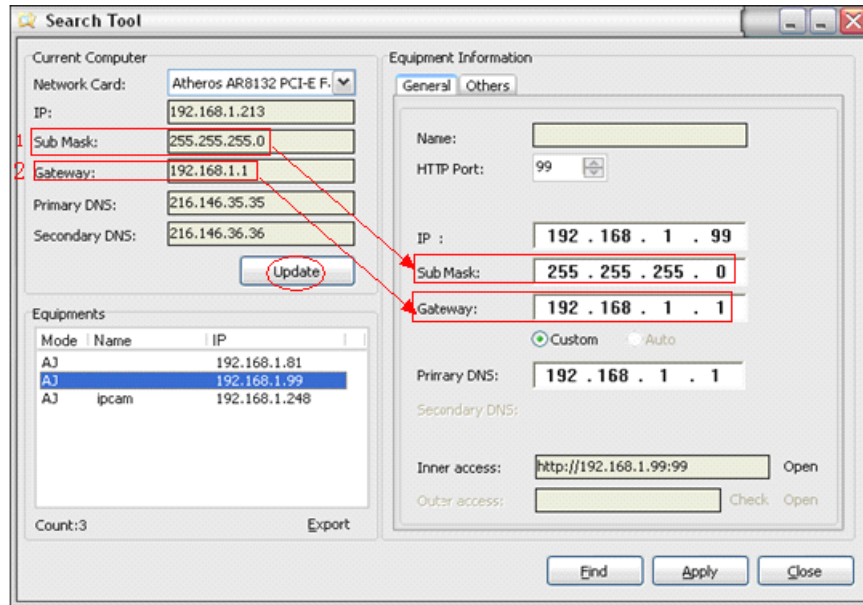
**Figure 3.17**

**You have to register an account firstly, keep the user, password, host, then fill in it.  
 Note: Only one DDNS can be chosen, for example, if you use manufacturer's DDNS, the 3rd party one won't work, if use the 3rd party DDNS, the manufacturer's one won't work.**

### **3.5.5.2 Port forwarding settings:**

#### **1: Setting the IP address of the camera**

**The default IP address of the camera is : [Http://192.168.1.99:99](http://192.168.1.99:99) The default IP address of camera you can change to any other one you like, such as:  
 Change to: 192.168.1.109:109. or 192.168.1.99:90 etc.  
 Click "Apply">fill in the user name and password of the camera>click "OK" then the camera will reboot, wait about 30 seconds. You will get your changed IP address.**



**Figure 3.18**

**Make sure the "Subnet Mask", "Gateway", "DNS Server" is the same as your router.**

## 2: Setting Port Forwarding in the router.

This is the most important step. Set port forwarding in router refer to the IP of your camera correctly, then the DDNS will work. Because there are so many kinds of routers from all over the world, so it's difficult to show a fix steps, but there are some samples of different routers' port forwarding settings as below, just for reference:

### TP-LINK:

- (1) Login the router.
- (2) Choose "Forwarding", select "Virtual Servers"



- (3) Click the Add New button, pop-up below:

### Add or Modify a Virtual Server Entry

---

Service Port:  (XX-XX or XX)

IP Address:

Protocol:

Status:

Common Service Port:

---

**Fill the service port (except 80), IP address of the camera, then click Save. The port and IP address should be the same as Camera.**

**BELKIN:**

**(1) Login the router.**

**(2) Choose “Firewall”, select “Virtual Servers”**

**(3) Input the port (except 80) and IP address, then click save.**

**Note: The port and IP address should be the same as Camera.**

**BELKIN** Router Setup Home | Help | Logout | Internet

**LAN Setup**  
LAN Settings  
DHCP Client List  
Static Routing

**Internet WAN**  
Connection Type  
DNS  
MAC Address Cloning

**Wireless**  
Channel and SSID  
Security  
Wi-Fi Protected Setup  
Guest Access  
Use as Access Point

**QoS**  
QoS Profiles  
Traffic Statistics

**Firewall**  
**Virtual Servers**  
MAC Address Filtering  
Access Control  
DMZ  
DDNS  
WAN Ping Blocking  
Security Log

**Utilities**  
Restart Router  
Restore Factory Defaults  
Save/Backup Settings  
Restore Previous Settings  
Firmware Update  
System Settings

### Firewall > Virtual Servers

This function will allow you to route external (Internet) calls for services such as a web server (port 80), FTP server (Port 21), or other applications through your Router to your internal network. [More Info](#)

Add    
Clear entry

	Enable	Description	Inbound port	Type	Private IP address	Private port
1	<input checked="" type="checkbox"/>	IPCAM	101	BOTH	192.168.2.56	101
2	<input type="checkbox"/>			BOTH	192.168.2.	
3	<input type="checkbox"/>			BOTH	192.168.2.	
4	<input type="checkbox"/>			BOTH	192.168.2.	
5	<input type="checkbox"/>			BOTH	192.168.2.	
6	<input type="checkbox"/>			BOTH	192.168.2.	
7	<input type="checkbox"/>			BOTH	192.168.2.	
8	<input type="checkbox"/>			BOTH	192.168.2.	
9	<input type="checkbox"/>			BOTH	192.168.2.	
10	<input type="checkbox"/>			BOTH	192.168.2.	

**Figure 3.19**

**DLINK:**

**(1) Login the router.**

**(2) Choose “Advanced”, select “Virtual Servers”**

**(3) Input the port, IP address, Protocol, then click save.**

**Note: The “public port” & “private port” should be the same as camera’s port, choose the protocol to be “both”.**

**D-Link**

DIR-601 // SETUP ADVANCED TOOLS STATUS SUPPORT

**VIRTUAL SERVER**

The Virtual Server option allows you to define a single public port on your router for redirection to an internal LAN IP Address and Private LAN port if required. This feature is useful for hosting online services such as FTP or Web Servers.

Save Settings Don't Save Settings

**24 -- VIRTUAL SERVERS LIST**

Name	IP Address	Port	Traffic Type	Protocol	Schedule
rivomaxcam	192.168.0.107	Public Port: 81 Private Port: 81	Both	Both	Always
	0.0.0.0	Public Port: 0 Private Port: 0		TCP	Always
		Public Port: 0 Private Port: 0		TCP	Always

**Helpful Hints...**

Check the **Application Name** drop down menu for a list of predefined server types. If you select one of the predefined server types, click the arrow button next to the drop down menu to fill out the corresponding field.

You can select a computer from the list of DHCP clients in the **Computer Name** drop down menu, or you can manually enter the IP address of the LAN computer to which you would like to open the specified port.

Select a schedule for when the virtual server will be enabled. If you do not see the schedule you need in

Figure 3.20

After all these 4 steps done, then you can use the DDNS freely, check the DDNS status from the camera as below, and get the link of DDNS for internet view.

Step: "Login">"Device Info":

**Device Status**

Device ID	0008FB006C21
Device Firmware Version	0.37.2.43
Device Embedded Web UI Version	0.9.4.12
Alias	WANSCAM118
Alarm Status	None
DDNS Status	Vipcam Succeed
UPnP Status	UPnP Succeed
P2P Status	No Action
MSN Status	No Action

Manufacturer's DDNS

Or

The 3rd party's DDNS.

Device Info

- Alias Settings
- Date & Time Settings
- Users Settings
- Multi-Device Settings
- Basic Network Settings
- Wireless Lan Settings
- ADSL Settings
- UPnP Settings
- DDNS Service Settings
- Service Settings
- MSN Settings
- Alarm Service Settings
- PTZ Settings
- Decoder Settings

Figure 3.21

### 3.5.5.3 DDNS Register

For example, you can go to DynDNS website to register a free account. <http://www.dyndns.org> / <http://www.dyndns.com>.

Step1: enter <http://www.dyndns.com/> and Create Account

Why DynDNS.com? | Services & Pricing | Support | Have an account?

# Rock solid, scalable DNS that just works.

Whether you are a home user, a small & medium business, or all the way up to enterprise... we understand you are busy! Let us simplify your to do list with our proven services.

[Forgot Your Password?](#)  
[Create an Account](#)

Figure 3.22

**Step2: Set the username and password as below:**

Create an account or log in to continue



<b>Username</b>	<input type="text" value="kevinzhu"/> <small>Username should start with letter and have 2-25 alphanumeric characters.</small>	<b>Already Registered?</b> <input type="text" value="Username"/> <input type="text" value="Password"/> <input type="button" value="Log in"/> <a href="#">Forgot your password?</a>
<b>Password</b>	<input type="password" value="....."/>	
<b>Confirm password</b>	<input type="password" value="....."/>	
<b>Email</b>	<input type="text" value="ipcame@qq.com"/>	
<b>Confirm Email</b>	<input type="text" value="ipcame@qq.com"/>	
<b>Security Image</b>	 Enter the numbers from the above image: <input type="text" value="73404"/>	
<b>Subscribe to</b>	<input checked="" type="checkbox"/> DynDNS.com newsletter (1 or 2 per month) <input type="checkbox"/> Dyn Inc. press releases	
	<input checked="" type="checkbox"/> I agree with the <a href="#">acceptable use policy (AUP)</a> and <a href="#">privacy policy</a> .	
	<input type="button" value="Create Account"/>	

Figure 3.23

**Step3: After a minute, you will receive a E-mail from DynDNS Support and it will give you a confirmation address**  
(e.g. <https://www.dyn dns.com/confirm/create/ONMzltcCBk6mchJI5MhVD0g>)

One more step to go...

We've sent an email to [ipocame@qq.com](mailto:ipocame@qq.com), to verify your account. Please check your inbox and click on the confirmation link.

If you do not receive the email in the next few minutes you can try [resending it](#).

Thanks for choosing DynDNS.com!



**Figure 3.24**

Your DynDNS.com Account 'kevinzhu' has been created. You need to visit the confirmation address below within 48 hours to complete the account creation process:




<https://www.dyndns.com/confirm/create/ONMz1tCBk6mcHJI5MhVD0g>

Our basic service offerings are free, but they are supported by our paid services. See <http://www.dyndns.com/services/> for a full listing of all of our available services.

If you did not sign up for this account, this will be the only

**Figure 3.25**

**Step4: When the Account Confirmed, login and start using your account. Choose Add Host Services(Figure 3.25) and enter Add New Hostname (Figure 3.26)page.**

My Services	Billing	Account Settings
 View, modify, purchase, and delete your services.	 Update your billing information, complete a purchase, and view invoices.	 Update your email address, set preferences, and delete your account.
<a href="#">My Zones/Domains</a> <a href="#">Add Zone/Domain Services</a>	<a href="#">View Shopping Cart</a>	<a href="#">Change Email Address</a>
<a href="#">My Hosts</a> <a href="#">Add Host Services</a>	<a href="#">Active Services</a>	<a href="#">Change Password</a>
<a href="#">Dynamic DNS Pro</a>	<a href="#">Order History</a>	<a href="#">Change Username</a>
<a href="#">Dynect SMB</a>	<a href="#">Billing Profile and Vouchers</a>	<a href="#">Contact Manager</a>
<a href="#">Internet Guide</a>	<a href="#">Renew Services</a>	<a href="#">Mailing Lists</a>
<a href="#">SendLabs SMTP</a>	<a href="#">Auto Renew Settings</a>	<a href="#">Move Services</a>
<a href="#">SSL Certificates</a>	<a href="#">Sync Expirations</a>	<a href="#">Preferences</a>
		<a href="#">Close Account</a>

**Figure 3.26**



**Hostname:**  .

Please enter valid hostname label to add new hostname (2-24 characters).

**Wildcard:**  create "\*.host.dyndns-yourdomain.com" alias  
only for DynDNS Pro users  
 (for example to use same settings for www.host.dyndns-yourdomain.com)

**Service Type:**  Host with IP address  
 WebHop Redirect (URL forwarding service)  
 Offline Hostname

---

**IP Address:**

[Your current location's IP address is 116.30.138.72](#)

TTL value is 60 seconds. [Edit TTL...](#)

---

**Mail Routing:**  I have mail server with another name and would like to add MX hostname...

No need to choose

**Figure 3.27**

**Step5: On the Add New Hostname page.**

**1) input your Hostname.**

**2) choose Host with IP address**

**3) click [Use auto detected IP address xxx.xx.xx.xxx](#). Then click **Create Host**.**

**4) after you have added a New Hostname , you need "Proceed to checkout"**

**Shopping Cart**

**⚡ Upgrade Options**

Free accounts allow only two Dynamic DNS hosts.

- to add more and enjoy additional benefits for only \$15.00 per year, [purchase Dynamic DNS Pro](#).
- to get Dynamic DNS for **your own domain**, use [Custom DNS](#).

**Dynamic DNS Hosts**

kevinsafe.dyndns.org	-	<input type="button" value="remove"/>	\$0.00
----------------------	---	---------------------------------------	--------

**Order Total:** \$0.00

**Figure 3.28**

## Free Services Checkout

Once you have confirmed the contents of your cart your services will be instantly activated.

Service	Period	Price
<b>Dynamic DNS Hosts</b>		
<a href="http://kevinsafe.dyndns.org">kevinsafe.dyndns.org</a>	-	\$0.00
<b>Sub-Total:</b>		<b>\$0.00</b>

[Activate Services >>](#)

**Figure 3.29**

## Host Services

[↑ My Services](#)

Hostname	Service	Details	Last Updated
<a href="http://kevinsafe.dyndns.org">kevinsafe.dyndns.org</a>	Host	116.30.138.72	Mar. 23, 2011 10:31 AM

» [Host Update Logs](#) [Add New Host](#)

**Figure 3.30**

**Step6: Now you obtained a Dynamic Domain Name(Figure3.30),and can use it in the DDNS Service Settings(details: 3.5.5)**

**Notice:**

**If you have a dynamic IP address, Make sure you have download the DynDNS's "Update Client". And installed it succeed in your computer.**

DynDNS.com by Dynamic Network Services Inc.

What are you looking for?

Why DynDNS.com? Services & Pricing **Support** Welcome kevinzhu (FREE)

**Support**

Have a dynamic IP address? Make sure you download our update client:

[Download Now](#)  
DynDNS® Updater (4.1.6)  
For Windows 2000 or later

[FAQs](#) [Tutorials](#) [Tools](#) [Contact](#)

Popular Topics

**Figure 3.31**

### 3.5.6 E-mail and FTP service Settings

Mail Service Settings	
Sender	hyg339814983@gmail.com
Receiver 1	hyg339814983@gmail.com
Receiver 2	
Receiver 3	
Receiver 4	
SMTP Server	smtp.gmail.com → Make sure your mail has enabled SMTP
SMTP Port	465
Transport Layer Security Protocol	TLS
	Gmail only support TLS at 465 port and STARTTLS at 25/587 port.
Need Authentication	<input checked="" type="checkbox"/>
SMTP User	hyg339814983 → Username of your mail
SMTP Password	..... → Password of your mail.
	<input type="button" value="Test"/> Please set at first, and then test.
Report Internet IP by Mail	<input checked="" type="checkbox"/>
	<input type="button" value="Submit"/> <input type="button" value="Refresh"/>
Please submit at first, then test.	

- Device Info
- Alias Settings
- Date&Time Settings
- Users Settings
- Multi-Device Settings
- Basic Network Settings
- Wireless Lan Settings
- ADSL Settings
- UPnP Settings
- DDNS Service Settings
- Mail Service Settings**
- Ftp Service Settings
- MSN Settings
- Alarm Service Settings
- PTZ Settings
- Decoder Settings
- Upgrade Device Firmware
- Backup & Restore Settings
- Restore Factory Settings
- Reboot Device
- Log
- GotoCamera
- Back

Figure 3.32

The above setting is a preparation for the alarm function, the sender should be entered the sender's email address, recipient 1、2、3、4 is filled with recipient E-mail address; SMTP server should be filled with the sender email SMTP server, e.g. the sender email address is abc@163.com, and enter mail.163.com. Generally SMTP port is 25, do not need to change; when needs to check, just tick it, and enter SMTP user and SMTP password, both of them are provided by Email provider, and test according to reference; when needs to send, please tick Email notification Internet IP address; The e-mail server and other information can be obtained from the mail service provider the email notification is image captured when alarming if no email notification is needed when alarming, and then no need to enter.

Set up FTP service, you can fill in parameters like following:

Ftp Service Settings	
FTP Server	<input type="text"/>
FTP Port	21
FTP User	<input type="text"/>
FTP Password	<input type="text"/>
FTP Upload Folder	<input type="text"/>
FTP Mode	PORT
	<input type="button" value="Test"/> Please set at first, and then test.
Upload Image Now	<input type="checkbox"/>
	<input type="button" value="Submit"/> <input type="button" value="Refresh"/>

Figure 3.33

The above setting is equally similar to Mail Server Settings, when alarming is Triggered, it also sends image, please enter FTP server, FTP port, FTP user, FTP password, FTP upload directory, FTP mode, FTP mode has two options: PORT and POSV. If needs a quick upload image, then select it, edit upload image interval (second) . **Pay attention: To make Mail service and FTP function work, you should make sure that your camera can be accessed from internet, besides, all the parameters should be right.**

### 3.5.7. Alarm Service Settings

As shown below, there are two modes of alarm trigger, first one is motion detection, please refer to below interface, the sensitivity of motion detection can be adjusted according to the users' requirement, the higher the number is, the lower sensitivity is; Another mode is input alarm, when connected, it triggers alarm through alarm input signal which connects to linkage alarm GPIO;

When triggered, there are 3 alarm modes: one is IO alarm linkage, camera connects with linkage alarm box through GPIO, sound the siren ; the second is email notification, send email with images captured; the last is upload pictures alarm, as the way mentioned before FTP upload pictures alarm, Upload pictures interval (second) keeps consisten t with the mentioned upload pictures interval of Ftp service settings. The schedule refers to arming time, as the selected time interval: 0: 00 minute per week to 0: 45 minutes and Monday 1: 00 hour and 2: 00 hour

Alarm Service Settings	
Motion Detect Armed	<input checked="" type="checkbox"/>
Motion Detect Sensibility	5
Alarm Input Armed	<input type="checkbox"/>
IO Linkage on Alarm	<input type="checkbox"/>
Send Mail on Alarm	<input checked="" type="checkbox"/>
Upload Image on Alarm	<input type="checkbox"/>
Scheduler	<input type="checkbox"/>

- Device Info
- Alias Settings
- Date & Time Settings
- Users Settings
- Multi-Device Settings
- Basic Network Settings
- Wireless Lan Settings
- ADSL Settings
- UPnP Settings
- DDNS Service Settings
- Mail Service Settings
- Ftp Service Settings
- MSN Settings
- Alarm Service Settings**
- PTZ Settings
- Decoder Settings
- Upgrade Device Firmware
- Backup & Restore Settings
- Restore Factory Settings
- Reboot Device
- Log
- Goto Camera
- Back

Figure3.34

### 3.5.8. PTZ Settings

This sector is for adjusting the speed of PT, pan left&right,tilt up&down.

PTZ Settings	
Disable Preset	<input type="checkbox"/>
Go center on boot	center ▾
PT speed	5 ▾
Upward patrol speed	5 ▾
Downward patrol speed	5 ▾
Leftward patrol speed	5 ▾
Rightward patrol speed	5 ▾
<input type="button" value="Submit"/> <input type="button" value="Refresh"/>	

Device Info
Alias Settings
Date&Time Settings
Users Settings
Multi-Device Settings
Basic Network Settings
Wireless Lan Settings
ADSL Settings
UPnP Settings
DDNS Service Settings
Mail Service Settings
Ftp Service Settings
MSN Settings
Alarm Service Settings
<b>PTZ Settings</b>
Decoder Settings
Upgrade Device Firmware
Backup & Restore Settings
Restore Factory Settings
Reboot Device
Log
GotoCamera
Back

### 3.5.9 Reset&Firmware upgrading

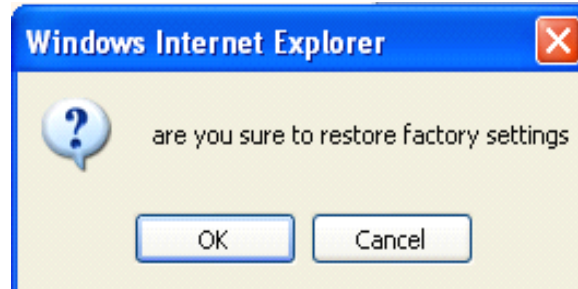
This sector is for camera firmware upgrading, it includes device system firmware Upgrade Device Firmware and device application firmware Upgrade Device Embedded Web UI. Be cautious to apply for it, **it is risky to upgrade your camera.**

Upgrade Device Firmware			
Upgrade Device Firmware	<input type="text"/>	<input type="button" value="Browse..."/>	<input type="button" value="Submit"/>
Upgrade Device Embedded Web UI	<input type="text"/>	<input type="button" value="Browse..."/>	<input type="button" value="Submit"/>

Figure 3.35

### 3.5.10 Restore Factory Settings

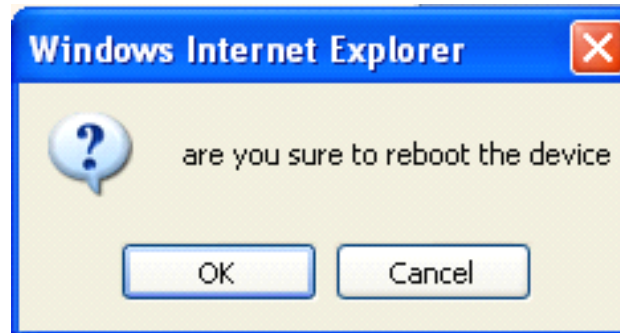
When users forget password, we can restore ex-factory settings, when click, a picture will pop up, Click ok, and wait for 1 minute and you can use it normally. User setting feature restores



**Figure 3.36**

### **3.5.11 Reboot Equipment**

**Click restart, it appears the above picture, click ok, wait for 1 minute and you can use it normally.**



**Figure 3.37**

### **3.5.12 Go to Camera**

**Camera grabs your equipment MAC number to website processing automatically, equipment's MAC number is unique. This function can not need to set up the DDNS and UPNP, that is, they have no relationship, but, as premise, your camera can be visited from internet. That means the camera IP must be set to the outer network IP address. Equipment default ip 192.168.1.99 can not be connected with gotocamera.**

Device Status	
Device ID	00D6FB014AA9
Device Firmware Version	47.37.2.48
Device Embedded Web UI Version	0.10.4.20
Alias	IPCAM
Alarm Status	None
DDNS Status	88safe Succeed
UPnP Status	UPnP Failed: Rejected by UPnP Device, Maybe Port Conflict
P2P Status	No Action
MSN Status	No Action

Attention: The device firmware version is over 47.37.2.48, the device embedded web UI version is over 0.10.4.20, then the camera got the GotoCamera function, Click GotoCamera button.

- Device Info
- Alias Settings
- Date&Time Settings
- Users Settings
- Multi-Device Settings
- Basic Network Settings
- Wireless Lan Settings
- ADSL Settings
- UPnP Settings
- DDNS Service Settings
- Mail Service Settings
- Ftp Service Settings
- MSN Settings
- Alarm Service Settings
- PTZ Settings
- Decoder Settings
- Upgrade Device Firmware
- Backup & Restore Settings
- Restore Factory Settings
- Reboot Device
- Log
- GotoCamera**
- Back

GotoCamera	
Don't have a GotoCamera account? Click <input type="button" value="Sign Up"/> 1. <a href="#">Start Remote Configuration</a>	
Email *	<input type="text" value="1634049161@qq.com"/>
Password *	<input type="password" value="••••••"/>
Camera Name *	<input type="text" value="mrkang"/>
Camera Description	<input type="text" value="mrkang123"/>
<input checked="" type="checkbox"/> Send Motion Alerts to GotoCamera	
<input type="button" value="Save"/> <input type="button" value="Clear"/>	
Version	10100(build212)
Device Identifier	00D6FB014AA9
Status	4 Online (client2.gotocamera.com:443)
<input type="button" value="Restart Service"/> * restart GotoCamera service	
<input type="button" value="Reset setting"/> * reset to factory default settings, all you existing settings will be lost	

- Device Info
- Alias Settings
- Date&Time Settings
- Users Settings
- Multi-Device Settings
- Basic Network Settings
- Wireless Lan Settings
- ADSL Settings
- UPnP Settings
- DDNS Service Settings
- Mail Service Settings
- Ftp Service Settings
- MSN Settings
- Alarm Service Settings
- PTZ Settings
- Decoder Settings
- Upgrade Device Firmware
- Backup & Restore Settings
- Restore Factory Settings
- Reboot Device
- Log
- GotoCamera**
- Back

**Register: according to prompts, step by step to fill in writing. After the account number is registered, you will receive a verification email sent to your mail box. Finishing the test and verify, then you got a Gotocamera account.**

**GotoCamera** 5.0.16 语言设置 Welcome, You have 1 message [Logout](#)

[Cameras](#) [Recordings](#) [Account](#) [Share](#) [Auto Record](#) [Download](#) [Buy](#) [Help](#)

Your email address will be your GotoCamera User ID

Please ensure you have typed your email address correctly; if you forget your password, this is where we will send it. Motion detection alerts may also be sent to your email address. We would like to let you know that we will never spam you or sell or otherwise provide your email address to any third party.

\*Email

\*Password

\*Country

\*Timezone

The timezone you select influences your Recording settings as well as other GotoCamera functions. Please select carefully.

Mobile number

Please do not enter parentheses () or hyphens - or any other prefix including your country code (the country code is automatically selected for you). For example, if your mobile number is +1-055-888-9999, please enter it as 5558889999

**GotoCamera** 5.0.16 语言设置 Welcome, You have 1 message [Logout](#)

[Cameras](#) [Recordings](#) [Account](#) [Share](#) [Auto Record](#) [Download](#) [Buy](#) [Help](#)

**GotoCamera** 5.0.16 语言设置 Welcome, You have 1 message [Logout](#)

[Cameras](#) [Recordings](#) [Account](#) [Share](#) [Auto Record](#) [Download](#) [Buy](#) [Help](#)

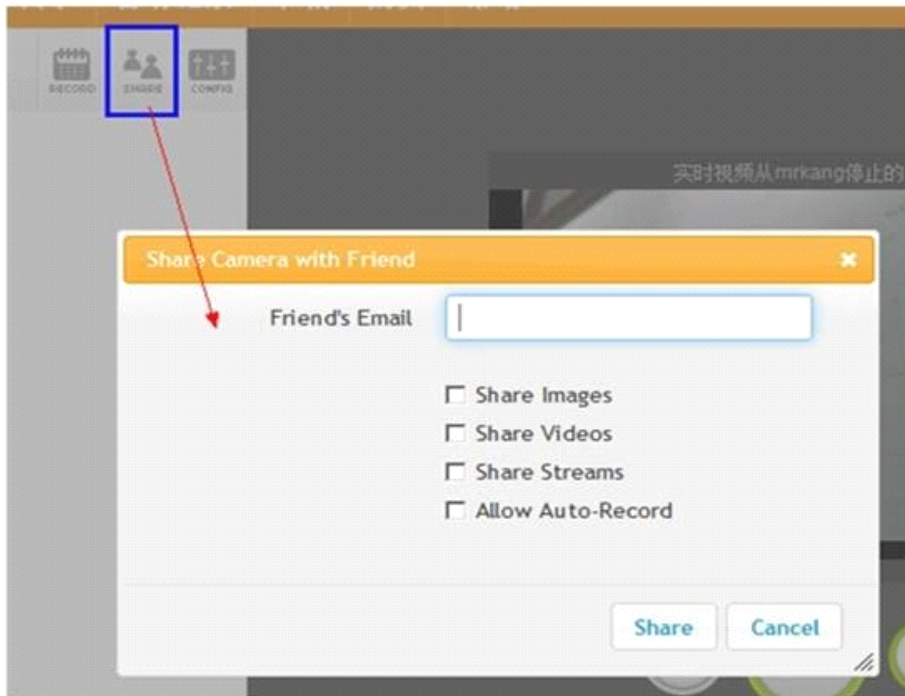
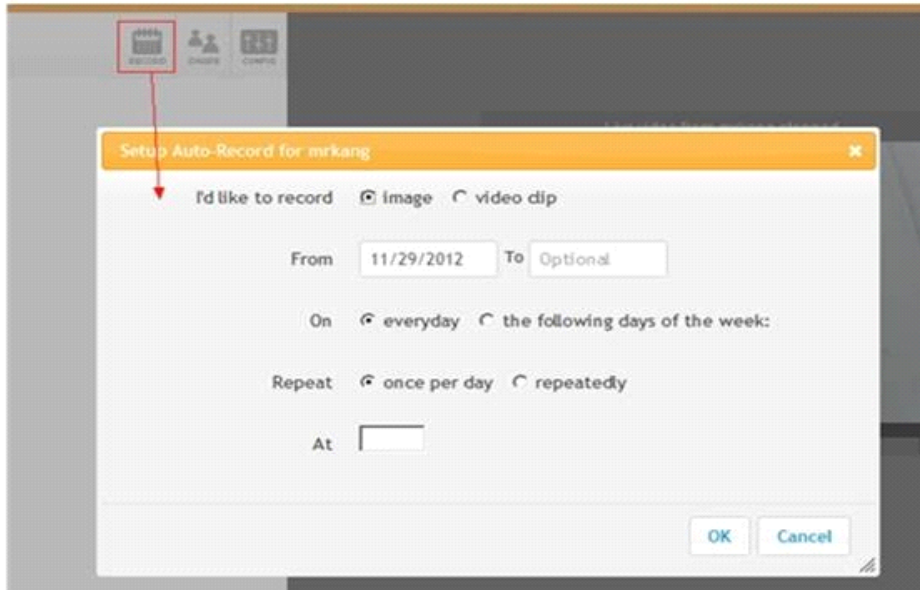
**mrkang** RECORDER SHARE DELETE

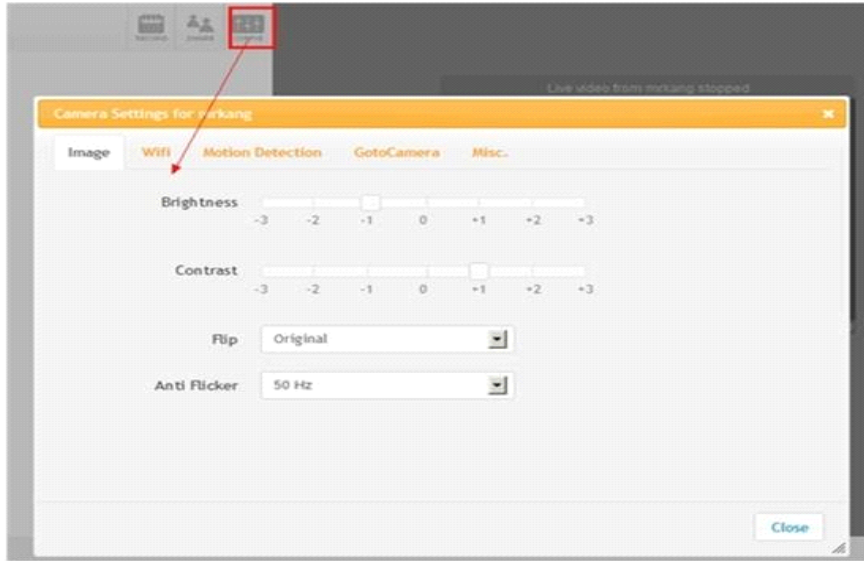
您正在查看设备 "extremers"

正在加载您的设备录像

Loading live video from mrkang ...








## 4 Warranty

**Under normal use condition, products resulting from its own failures in the warranty period will be free maintenance. Warranty Terms as following:**

**a) Charge-free maintenance of the product is one year. We can repair it for free during the guarantee period (Damages not caused by misuse or vandalism). Repair over guarantee period, we will charge maintenance fee.**

**b) During guarantee period, breakdown caused by misuse or other reasons out of**

range of warranty. You could ask repair depend on the card. We only charge for changed components, the maintenance charge is free.

c) When the products need maintenance, hand up the card with products to the manufacture or local distributor.

d) Take apart item crust, tear up the sealing label privately, this is out of warranty range.

e) We do not accept the damaged item due to modification or add other functions.

**The Following Circumstances will not be free warranty**

a) Period check, maintenance or change components due to normal attrition.

b) The damages due to crash, extrusion, artificial flooding, moisture or other personal reasons.

c) The damages due to floods, fire, lightning strike and other natural calamities or force majeure incidents factors

d) Repaired item by non-authorized repair centers.

All above terms, if changed, regarded to relevant regulations.

# THAT'S ALL, THANK YOU!